

# SoundModem Installation

This procedure applies to use of the SignalLink USB for VHF Packet. ***It assumes that the SignalLink USB has been set up correctly as shown in the SignalLink operation and instruction manual. Particularly with respect to the Windows system sound settings, and working with MMSSTV***

***To change the settings you MUST have the signalink plugged in and working but no radio at this time***

Go to <http://uz7.ho.ua/packetradio.htm> and download the file soundmodem95.zip.

The 95 refers to the version number. It may be higher in the future.

There are some other files you can download, but that one is the only one you need to run the program. Unzip the file and copy the soundmodem.exe to a convenient folder ( *I drop it on my Widows Desktop* ).

There is no installation required.

Run the .exe file. You may get a message from your Anti-Virus program. Ignore it.

On the SoundModem screen, click Settings/Devices.

look for the named USB CODEC" in the list..... for both Output and Input devices.

*(If you dont have the Signalink on, won't see this choice)*

Check - TX rotation

Check - Single channel output

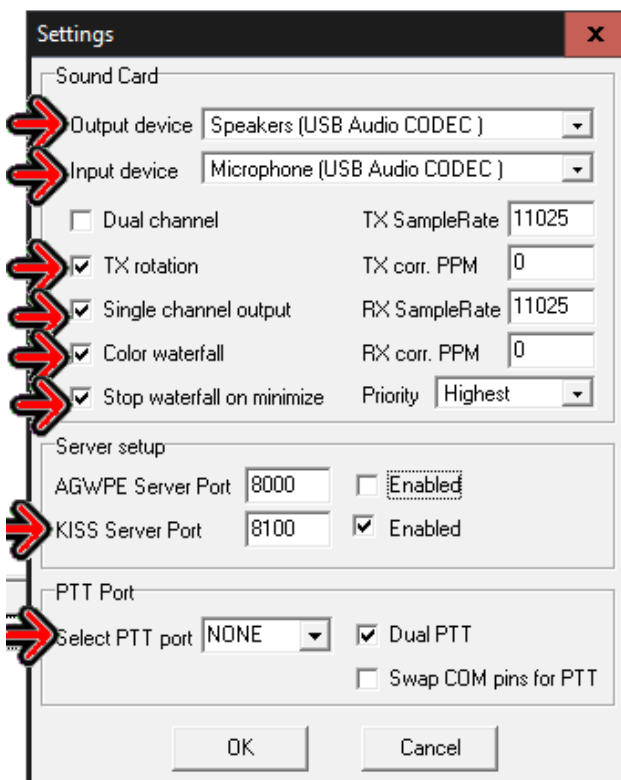
Check - Color waterfall. This can use a lot of computer resources, so you may not want to check this. It will depend upon your computer's CPU.

Check - Stop waterfall on minimize.

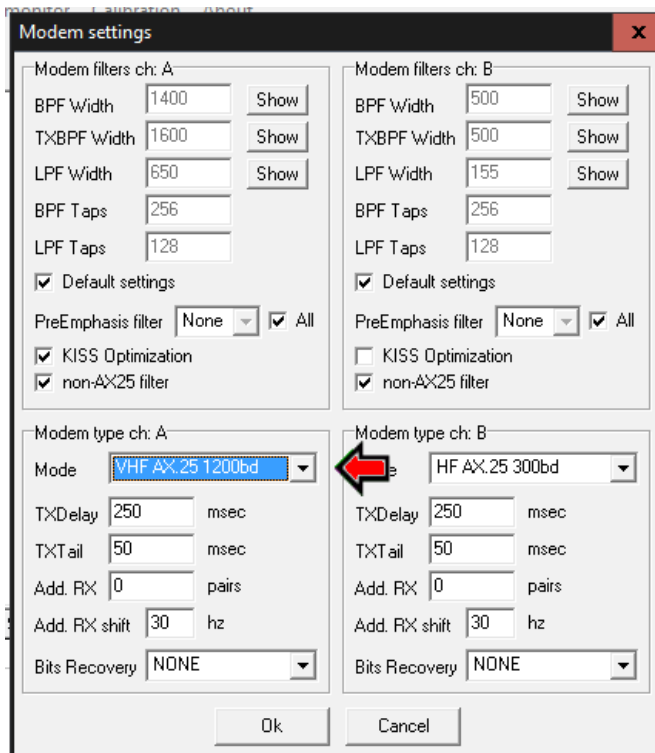
Check - Enabled for KISS Server Port. Do not check AGWPE Server Port.

PTT Port should be NONE. Make sure neither box is checked.

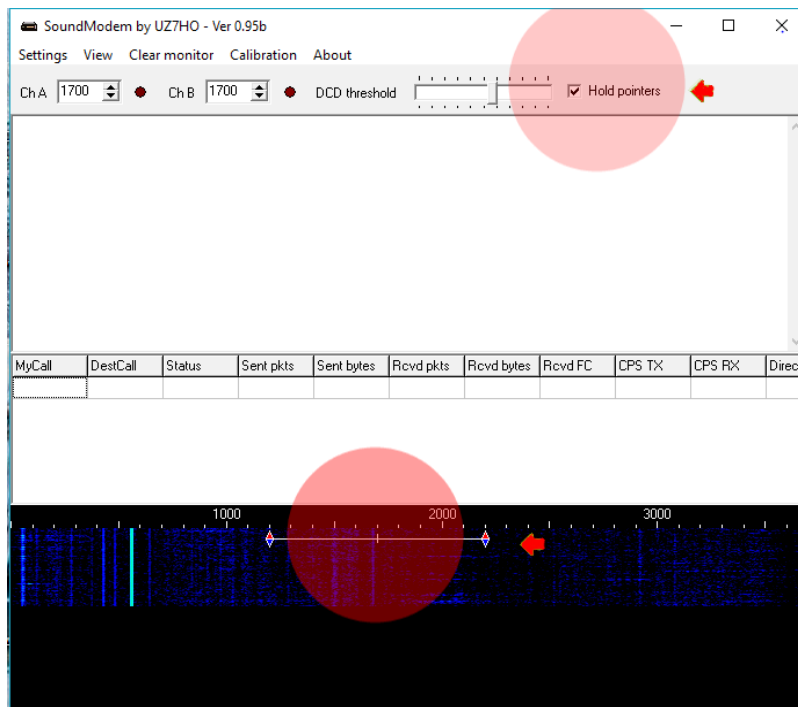
**Click OK**



Click – Settings/Modems  
Check – Default settings  
Check – KISS Optimization  
Check – non-AX25 filter  
Under Modem type ch: A  
Set Mode to VHF AX25 1200 bd.



Click OK

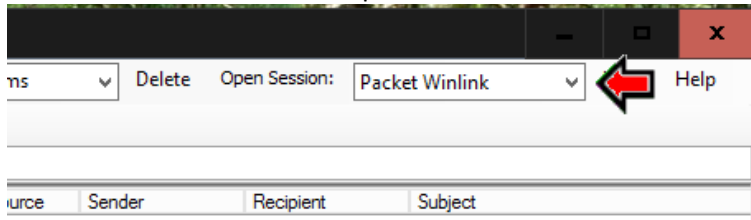


Set Slider to 1700 and click on hold pointers

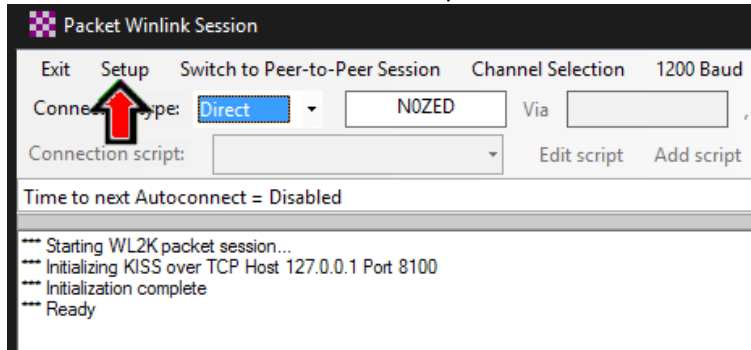
**Leave the SoundModem running**, and start RMS Express. SoundModem can be minimized if you don't care about the waterfall.

Set to Packet Winlink

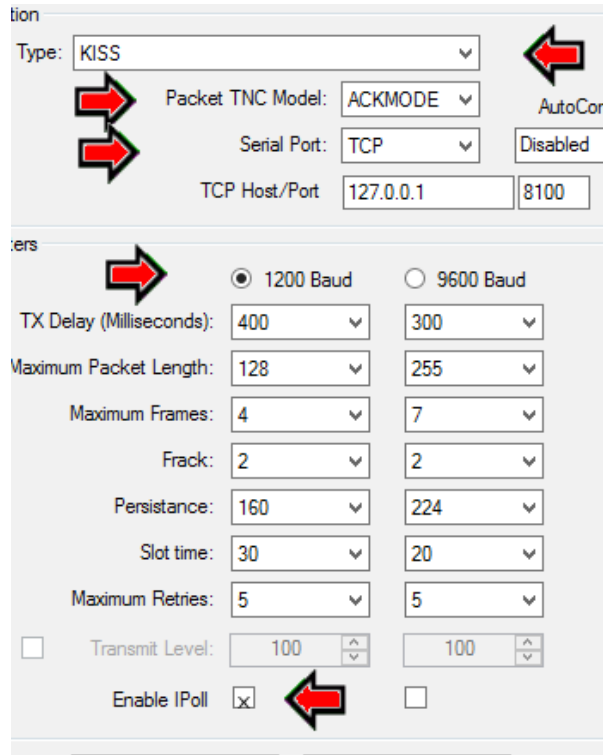
Click – Open Session:



Click – Setup



Set Packet TNC Type: to KISS  
 Set Packet TNC Model: to ACKMODE  
 Set Serial Port: to TCP

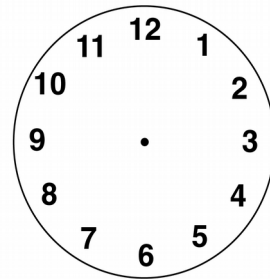


Under TNC Parameters, select 1200 Baud.  
 Check – Enable IPoll (Bottom of screen)

At this point you should be able to click Start and connect with a gateway.  
 The normal sequence will be to plug in the SignalLink USB and turn it on.

your signalink adjustment settings for winlink

**1 , 3 , 7 as if looking at a clock face**



CLINE

Then start the SoundModem and leave it running. Start RMS Express last and use it like you normally would.

With RMS Express set up like this, you can switch back and forth between VHF Packet and Winmor without any changes, and not need a TNC for either one. (Winmor is the HF drivers)

Dick – W6CCD  
 5/26/2016 (Rev. 4)  
 George NOZED for Clackamas County Or. ARES (CARES)  
 09/11/016 (rev 5)