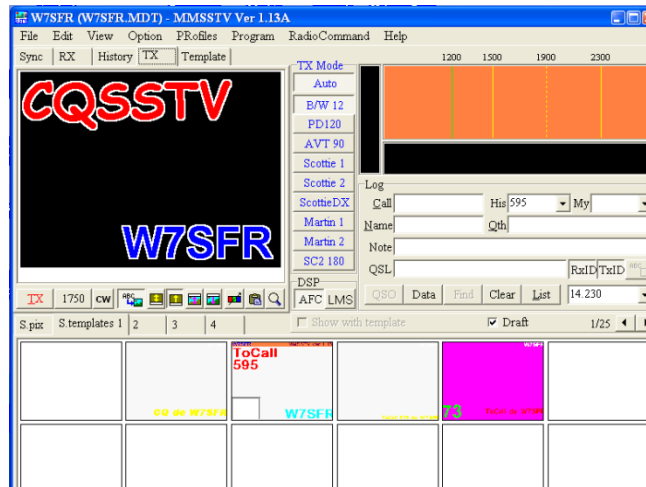
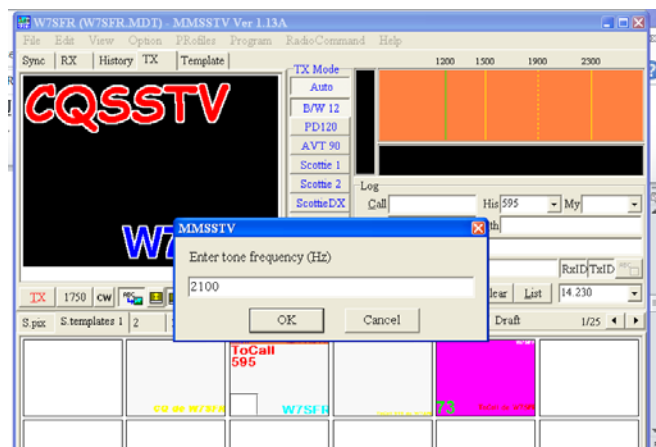


Simplex Repeater Tone Frequency Protocol

During CARES operations, you may be asked to use a specific Repeater tone, or find that you can reach one repeater but not another. This is a relatively straight forward operation. You will find the repeater frequencies listed in the exercise plan or on the CARES website. You may wish to make a list to keep with you during field operations. The repeater tone frequency is the 4 digit number found between the TX and CW button just below the lower left corner of the picture. In this example the tone is 1750.



To change the tone frequency, right click on the tone frequency button, and enter the new tone, then hit OK to return to the main screen. You should see the new frequency posted in the button.



To activate a simplex repeater with the MMSSTV software, left click on the tone frequency button then click it again after about 4 seconds. If you are getting through to that repeater, you will hear a CW response. At that point you have 10 seconds to left click the TX button to start your transmission. If you don't get it done in that time frame, start over by clicking on the tone frequency button as described above. If you don't get a CW response, try clicking on the tone frequency button again.

Dec. 1, 2014 W7SFR