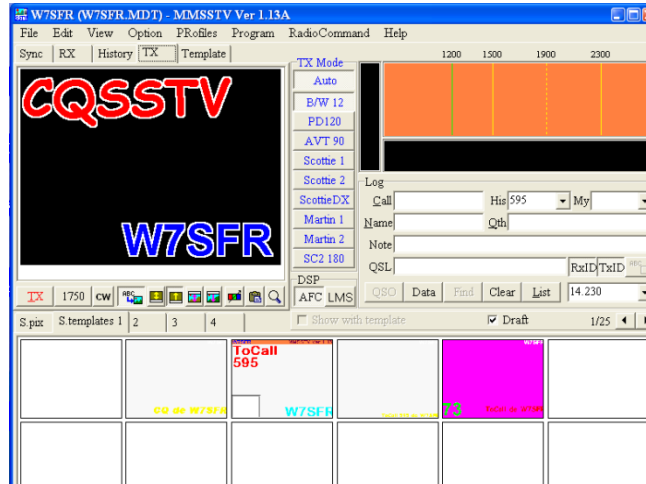
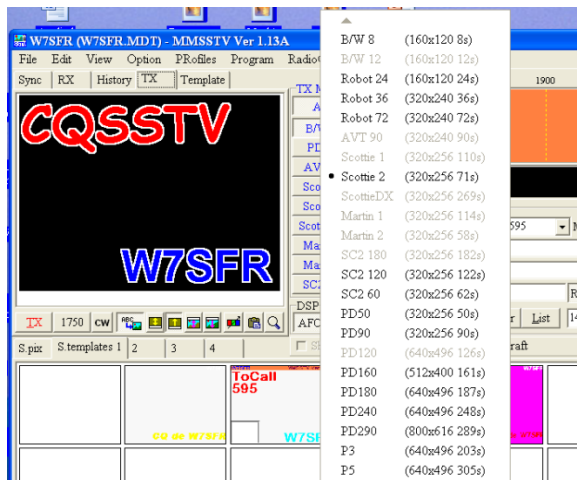


Changing TX Mode protocol

During CARES operations, you may be asked to use a specific TX Mode when transmitting a picture. The TX Mode is to the right of the picture



If you do not see the mode you desire in the list, you will need to select it from the available list. To do that, you need to select a mode you seldom use such as Martin1. Just left click on it. Then right click on the same mode and a list of available modes will drop down like is shown here.



At that point left click on the desired mode, this list will go away and you will find your selected mode where the old mode was. Left click on it and it will be selected for your next transmission.

We use PD 120 for high resolution (640 x 496 pixel) photos, B/W12 (320 x 256 pixel) for draft photos (they get sent as black and white regardless and low resolution)