



Getting The Data Back Into A Radio

Using Chirp

Get ready

1. Open a .img file of your radio, or download one from it using Radio > Download From Radio. Make sure that the tab at the top says something like "Yaesu FT-7800" or "Icom IC-880" to indicate that you're operating on a radio-specific driver.
2. If this was a read, you might want to file / save a file to revert to if needed

CHIRP

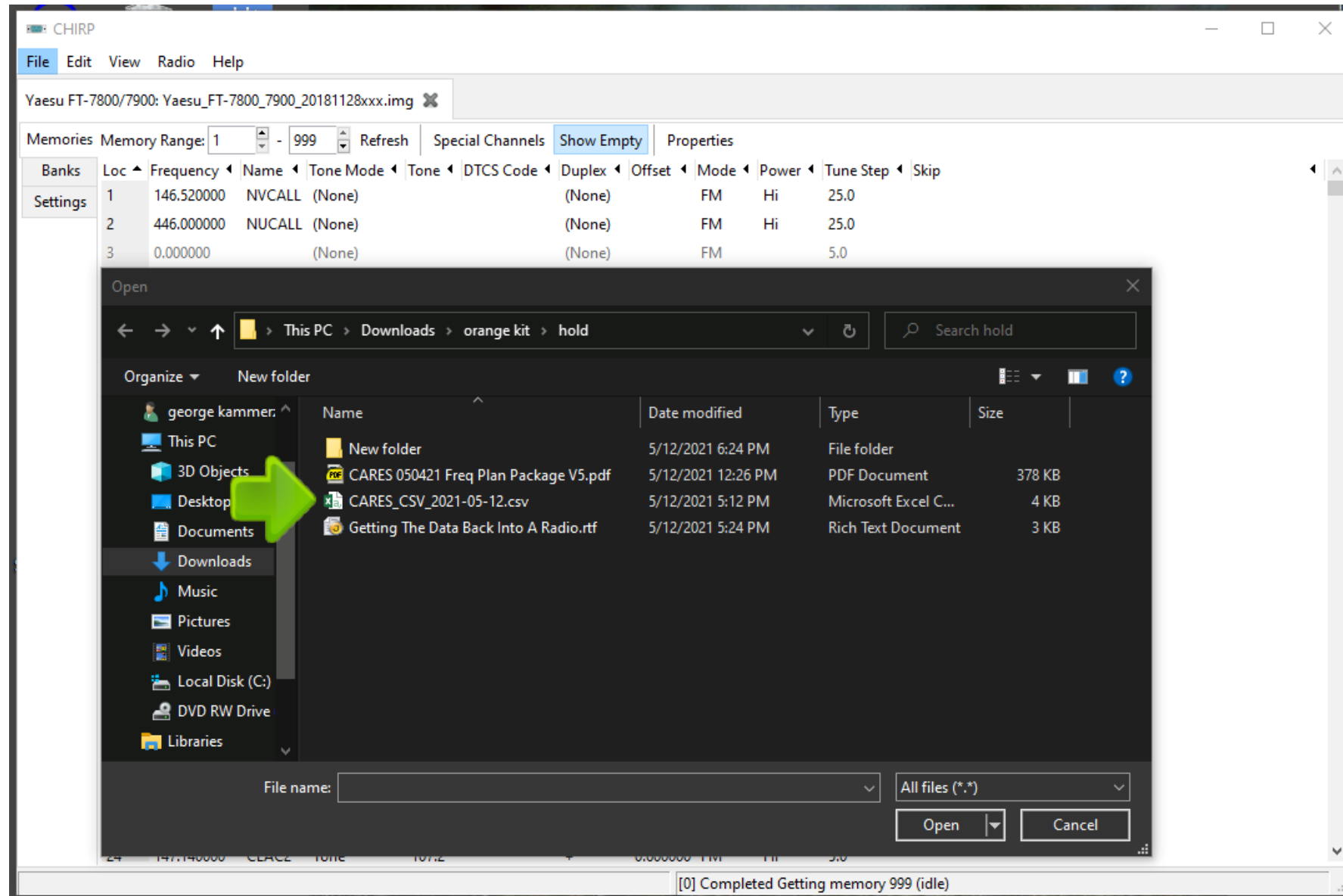
File Edit View Radio Help

Yaesu FT-7800/7900: Yaesu_FT-7800_7900_20181128xxx.img*

Memories Memory Range: 1 - 999 Refresh Special Channels Show Empty Properties

Banks	Loc	Frequency	Name	Tone Mode	Tone	DTCS Code	Duplex	Offset	Mode	Power	Tune Step	Skip
Settings	1	146.520000	NVCALL	(None)			(None)		FM	Hi	25.0	
	2	446.000000	NUCALL	(None)			(None)		FM	Hi	25.0	
	3	0.000000		(None)			(None)		FM		5.0	
	4	0.000000		(None)			(None)		FM		5.0	
	5	0.000000		(None)			(None)		FM		5.0	
	6	0.000000		(None)			(None)		FM		5.0	
	7	0.000000		(None)			(None)		FM		5.0	
	8	0.000000		(None)			(None)		FM		5.0	
	9	0.000000		(None)			(None)		FM		5.0	
	10	0.000000		(None)			(None)		FM		5.0	
	11	0.000000		(None)			(None)		FM		5.0	
	12	0.000000		(None)			(None)		FM		5.0	
	13	0.000000		(None)			(None)		FM		5.0	
	14	0.000000		(None)			(None)		FM		5.0	
	15	0.000000		(None)			(None)		FM		5.0	
	16	0.000000		(None)			(None)		FM		5.0	
	17	0.000000		(None)			(None)		FM		5.0	

Go to File / Import and navigate to and pick the cares import file , select open



Chirp will show this box if it looks OK click OK

ne | Tone Mode | Tone | DCS Code | Duplex | Offset | Mode | Power | Tune Step | Skip
CALL (None) (None) FM Hi 25.0
CALL (None) (None) FM Hi 25.0

Import From File

Import	To	From	Name	Frequency	Comment
<input type="checkbox"/>	0	0		146.010000	
<input checked="" type="checkbox"/>	1	1	CLAC 1	147.120000	
<input checked="" type="checkbox"/>	2	2	CLAC 2	147.140000	
<input checked="" type="checkbox"/>	3	3	CLAC 3	146.420000	
<input checked="" type="checkbox"/>	4	4	CLAC 4	146.960000	
<input checked="" type="checkbox"/>	5	5	CLAC 5	444.225000	
<input checked="" type="checkbox"/>	6	6	CLAC 6	440.250000	
<input checked="" type="checkbox"/>	7	7	CLAC 7	441.900000	
<input checked="" type="checkbox"/>	8	8	CLAD 1	440.987500	
<input checked="" type="checkbox"/>	9	9	CLAD 2	441.037500	
<input checked="" type="checkbox"/>	10	10	CLAD 3	441.062500	
<input checked="" type="checkbox"/>	11	11	CLAD 4	441.525000	
<input checked="" type="checkbox"/>	12	12	CLAD 5	145.770000	

Select: All None Inverse Adjust New Location: +100 +10 +1 -1 -10 -100 Auto Reverse

OK Cancel

A SI (None) (None) FM Hi 5.0

A1 Tone 100.0 - 0.600000 FM Hi 5.0

Your Radio can now get this information into your radio

CHIRP

File Edit View Radio Help

Yaesu FT-7800/7900: Yaesu_FT-7800_7900_20181128xxx.img*

Memories Memory Range: 1 - 999 Refresh Special Channels Show Empty Properties

Banks	Loc	Frequency	Name	Tone Mode	Tone	DTCS Code	Duplex	Offset	Mode	Power	Tune Step	Skip
Settings	1	147.120000	CLAC 1	Tone	100.0		+	0.600000	FM	Hi	5.0	
	2	147.140000	CLAC 2	Tone	107.2		+	0.600000	FM	Hi	5.0	
	3	146.420000	CLAC 3	(None)			(None)		FM	Hi	5.0	
	4	146.960000	CLAC 4	Tone	127.3		-	0.600000	FM	Hi	5.0	
	5	444.225000	CLAC 5	(None)			+	5.000000	FM	Hi	5.0	
	6	440.250000	CLAC 6	Tone	127.3		+	5.000000	FM	Hi	5.0	
	7	441.900000	CLAC 7	(None)			+	5.000000	FM	Hi	5.0	
	8	440.987500	CLAD 1	(None)			(None)		FM	Hi	5.0	
	9	441.037500	CLAD 2	(None)			(None)		FM	Hi	5.0	
	10	441.062500	CLAD 3	(None)			(None)		FM	Hi	5.0	
	11	441.525000	CLAD 4	(None)			(None)		FM	Hi	5.0	
	12	145.770000	CLAD 5	(None)			(None)		FM	Hi	5.0	
	13	145.570000	CLAD 6	(None)			(None)		FM	Hi	5.0	
	14	145.520000	CLAD 7	(None)			(None)		FM	Hi	5.0	
	15	147.420000	CFD1 1	(None)			(None)		FM	Hi	5.0	
	16	431.850000	CFD1 2	(None)			(None)		FM	Hi	5.0	
	17	431.825000	CLOG 1	(None)			(None)		FM	Hi	5.0	
	18	431.875000	CLOG 2	(None)			(None)		FM	Hi	5.0	
	19	146.430000	DAMA 1	(None)			(None)		FM	Hi	5.0	
	20	146.540000	EAST 1	(None)			(None)		FM	Hi	5.0	
	21	145.710000	EAST 3	(None)			(None)		FM	Hi	5.0	
	22	440.275000	EVENT1	Tone	103.5		(None)		FM	Hi	5.0	
	23	146.460000	GLAD 1	(None)			(None)		FM	Hi	5.0	
	24	444.300000	LO 1	Tone	82.5		+	5.000000	FM	Hi	5.0	

[0] Completed Getting memory 999 (idle)

Attach the programming cable to the radio and upload to radio with a Radio / upload to radio

The screenshot shows the CHIRP software interface. The main window displays a table of memory banks for a Yaesu FT-7800/7900 radio. A 'Radio' dialog box is open, allowing the user to select the radio model and port.

Memories Memory Range: 1 - 999 Refresh Special Channels Show Empty Properties

Banks	Loc	Frequency	Name	Tone Mode	Tone	DTCS Code	Duplex	Offset	Mode	Power	Tune Step	Skip
Settings	1	147.120000	CLAC 1	Tone	100.0		+	0.600000	FM	Hi	5.0	
	2	147.140000	CLAC 2	Tone	107.2		+	0.600000	FM	Hi	5.0	
	3	146.420000	CLAC 3	(None)			(None)		FM	Hi	5.0	
	4	146.960000	CLAC 4	Tone	127.3		-	0.600000	FM	Hi	5.0	
	5	444.225000	CLAC 5	(None)			+	5.000000	FM	Hi	5.0	
	6	440.250000	CLAC 6	Tone	127.3		+	5.000000	FM	Hi	5.0	
	7	441.900000	CLAC 7	(None)			+	5.000000	FM	Hi	5.0	
	8	440.987500	CLAD 1	(None)			(None)		FM	Hi	5.0	
	9	441.037500	CLAD 2	(None)								
	10	441.062500	CLAD 3	(None)								
	11	441.525000	CLAD 4	(None)								
	12	145.770000	CLAD 5	(None)								
	13	145.570000	CLAD 6	(None)								
	14	145.520000	CLAD 7	(None)								
	15	147.420000	CFD1 1	(None)			(None)		FM	Hi	5.0	
	16	431.850000	CFD1 2	(None)			(None)		FM	Hi	5.0	
	17	431.825000	CLOG 1	(None)			(None)		FM	Hi	5.0	
	18	431.875000	CLOG 2	(None)			(None)		FM	Hi	5.0	

Radio Dialog Box:

- Port: COM4
- Vendor: Yaesu
- Model: FT-7800/7900
- Buttons: OK, Cancel

**If you run into problems or are unsure contact one of
this team at techcomm@clackamasares.org**

